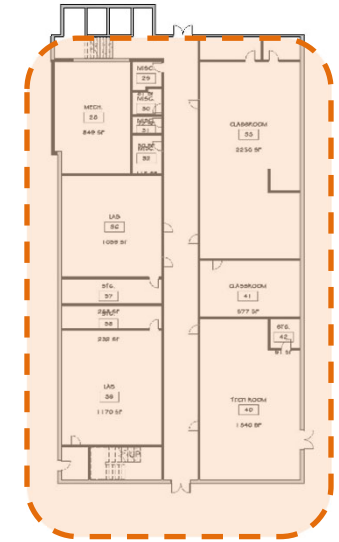




# DEMOLITION AREAS

DEMOLITION AREA – 12,310 SF

DEMOLITION AREA – 14,125 SF



LOWER LEVEL

1" = 20'-0"

3

DEMOLITION AREA – 12,265 SF



BOE CENTRAL OFFICES



MAIN LEVEL

1" = 20'-0"

1

DEMOLITION AREA – 12,265 SF

- DEMOLITION AREA OPTION 1 – 12,310 SF
- DEMOLITION AREA OPTION 2 – 36,840 SF
- DEMOLITION AREA OPTION 3 – 26,435 SF
- DEMOLITION AREA OPTION 4 – 50,965 SF

# Repurposing North Stonington High School – Option 1

**PLAYGROUND & FIELDS**

**PAVILLION**

**PARK & REC FACILITY**

**WHEELER LIBRARY**



**BOE CENTRAL OFFICES**

**COMMUNITY MEETING ROOM**

# Repurposing North Stonington High School – Option 1

**PLAYGROUND & FIELDS**

**PAVILLION**

**PARK & REC FACILITY**



**BOE CENTRAL OFFICES**

**MAIN ENTRANCE ROUTE 2**

# Repurposing North Stonington High School – Option 1

PARK & REC GYM

PAVILLION

PLAYGROUND & FIELDS



MAIN STREET ENTRANCE

# Repurposing North Stonington High School – Option 1

NSHS / MS

PLAYGROUND & FIELDS

WHEELER LIBRARY



ENTRANCE TOWN OFFICES

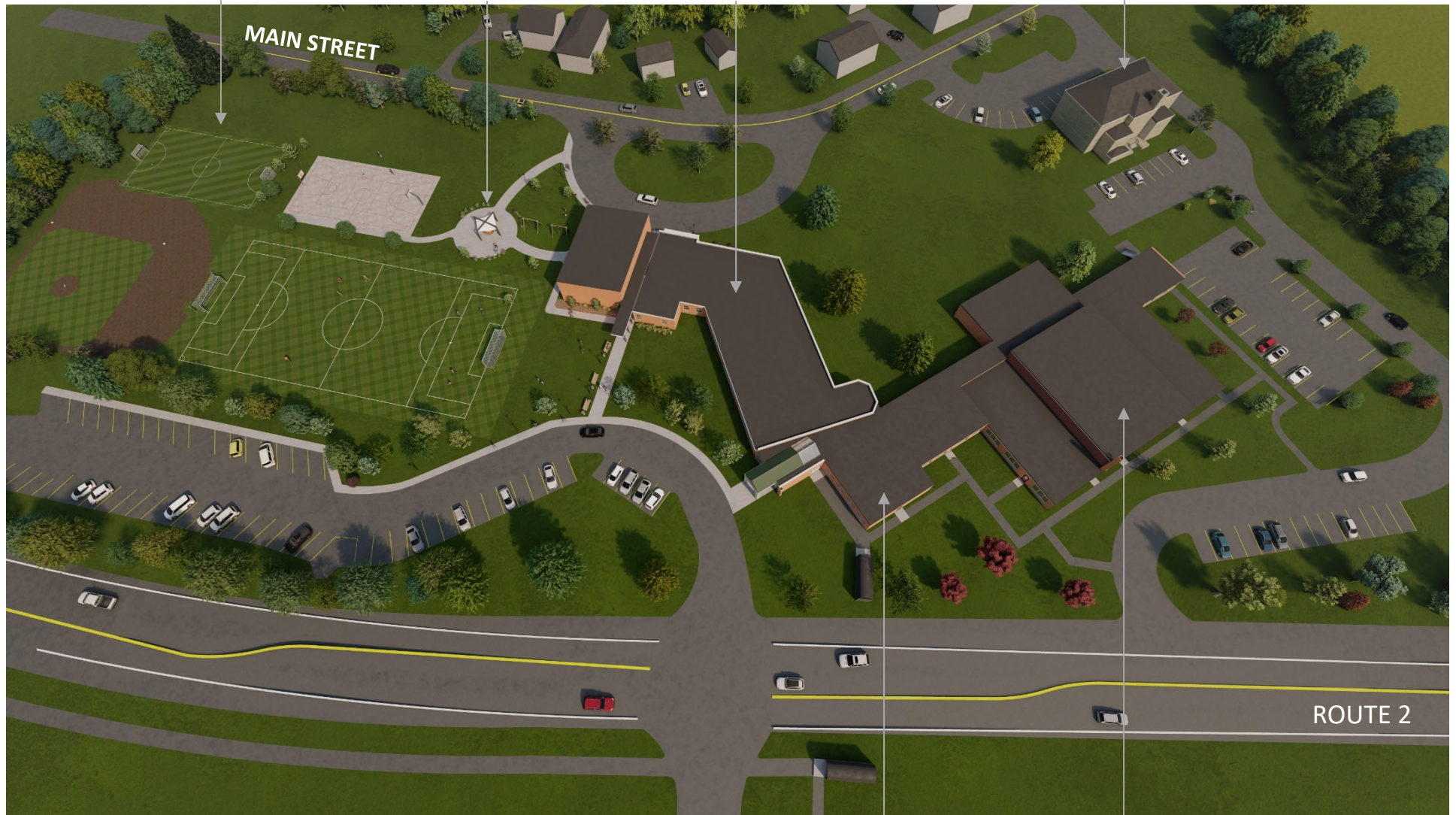
# Repurposing North Stonington High School – Option 2

**PLAYGROUND & FIELDS**

**PAVILLION**

**PARK & REC FACILITY**

**WHEELER LIBRARY**



**BOE CENTRAL OFFICES**

**COMMUNITY MEETING ROOM**

# Repurposing North Stonington High School – Option 2

PLAYGROUND & FIELDS

PAVILLION

PARK & REC FACILITY



MAIN ENTRANCE @ ROUTE 2



# Repurposing North Stonington High School – Option 2

PARK & REC GYM

PAVILLION

PLAYGROUND & FIELDS



MAIN STREET ENTRANCE

# Repurposing North Stonington High School – Option 3

**PLAYGROUND & FIELDS**

**PAVILLION**

**WHEELER LIBRARY**

**BOE CENTRAL OFFICES**



**PARK & REC FACILITY**

**COMMUNITY MEETING ROOM**

# Repurposing North Stonington High School – Option 3



# Repurposing North Stonington High School – Option 3

MAIN STREET

WHEELER LIBRARY

PAVILLION

PARK & REC FACILITY

PLAYGROUND & FIELDS



BASKETBALL COURT

WALKING PATH

# Repurposing North Stonington High School – Option 4

**PLAYGROUND & FIELDS**

**PAVILLION**

**AMPHITHEATER**

**WHEELER LIBRARY**



**BOE CENTRAL OFFICES**

**COMMUNITY MEETING ROOM**

**QA+M**  
architecture

# ORIGINAL WHEELER MIDDLE & HIGH SCHOOL

